

# Model: Z 40 126 Y

## Data

---

Type: Semi-hermetic piston compressors

Producer: Frascold

Series: Z

## Model: Z 40 126 Y

### Technical data

Nominal motor power [kW/HP]:	30 / 40
Cylinder count:	6
Displacement [m <sup>3</sup> /h]:	125,72
RPM [min <sup>-1</sup> ]:	1450
Weight net [kg]:	240
Weight gross [kg]:	262
Oil charge [dm <sup>3</sup> ]:	7,5

### Electrical data

	<u>DOL Y Y</u>	<u>PWS Y / Y</u>
Power supply [V/~ / Hz]:	400V/3/50	400V/3/50
Locked rotor current [A]:	273	159,2
Max. operating current [A]:	71,9	71,9

### Connections

	<u>milimeters</u>	<u>inches</u>
Suction line:	67	2 5/8
Discharge line:	42	1 5/8

# Model: Z 40 126 Y

## Capacity

---



R22

### Cooling capacity [W]

$t_c \setminus t_e$	12.5	7.5	5	0	-5	-10	-15	-20
30	169 930	142 810	130 810	108 050	88 810	72 530	58 750	47 120
40	151 550	127 710	117 080	96 530	79 100	64 270	51 790	41 280
45	142 800	120 400	110 400	90 910	74 360	60 320	48 420	38 450
50	133 920	113 020	103 670	85 240	69 600	56 320	45 050	35 640

### Power input [W]

$t_c \setminus t_e$	5	-10	-20
40	27 410	23 310	18 860

-  With head cooling
-  With liquid injection or oil cooler

Operating conditions: suction gas temperature 20°C, 0K subcooling

$t_c$  - Condensing temperature [°C]

$t_e$  - Evaporating temperature [°C]

# Model: Z 40 126 Y

## Capacity

---



R134a

### Cooling capacity [W]

$t_c \setminus t_e$	12.5	7.5	5	0	-5	-10	-15	-20
50	89 250	73 800	66 880	54 460	43 760	34 570	26 710	19 980
60	76 630	63 090	57 040	46 150	36 730	28 620	21 650	15 680
70	63 730	52 330	47 160	37 780	29 680	22 670	16 630	11 440
80	50 620	41 360	37 130	29 400	22 680	16 830	11 780	7 420

### Power input [W]

$t_c \setminus t_e$	12.5	5	0	-10
60	26 440	22 870	20 390	15 360

-  With head cooling
-  With liquid injection or oil cooler

Operating conditions: suction gas temperature 20°C, 0K subcooling

$t_c$  - Condensing temperature [°C]

$t_e$  - Evaporating temperature [°C]

# Model: Z 40 126 Y

## Capacity

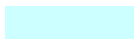

R404A/R507

### Cooling capacity [W]

$t_c \setminus t_e$	7.5	5	0	-5	-10	-15	-20	-25	-30	-35	-40
<b>30</b>	158 140	145 130	121 330	100 360	82 030	66 150	52 540	41 020	31 390	23 480	17 090
<b>40</b>	134 530	123 220	102 620	84 560	68 850	55 320	43 770	34 030	25 900	19 200	13 750
<b>45</b>	122 430	111 990	93 040	76 480	62 140	49 830	39 370	30 560	23 240	17 200	12 270
<b>50</b>	110 170	100 630	83 360	68 350	55 400	44 350	35 000	27 170	20 680	-	-

### Power input [W]

$t_c \setminus t_e$	5	-10	-20	-30	-40
<b>40</b>	31 310	26 080	21 430	16 560	12 080

-  With head cooling
-  With liquid injection or oil cooler

Operating conditions: suction gas temperature 20°C, 0K subcooling

$t_c$  - Condensing temperature [°C]

$t_e$  - Evaporating temperature [°C]

# Model: Z 40 126 Y

## Capacity



R407C

### Cooling capacity [W]

$t_c \setminus t_e$	12.5	7.5	5	0	-5	-10	-15	-20	-25
30	171 420	156 670	129 760	106 260	86 000	68 720	54 100	41 810	31 440
40	149 800	136 850	113 190	92 490	74 610	59 330	46 370	35 390	26 060
45	138 680	126 640	104 630	85 360	68 710	54 470	42 370	32 110	23 350
50	127 420	116 300	95 950	78 130	62 730	49 540	38 330	28 800	20 650

### Power input [W]

$t_c \setminus t_e$	7.5	0	-10	-20
40	29 500	24 780	21 130	16 600

-  With head cooling
-  With liquid injection or oil cooler

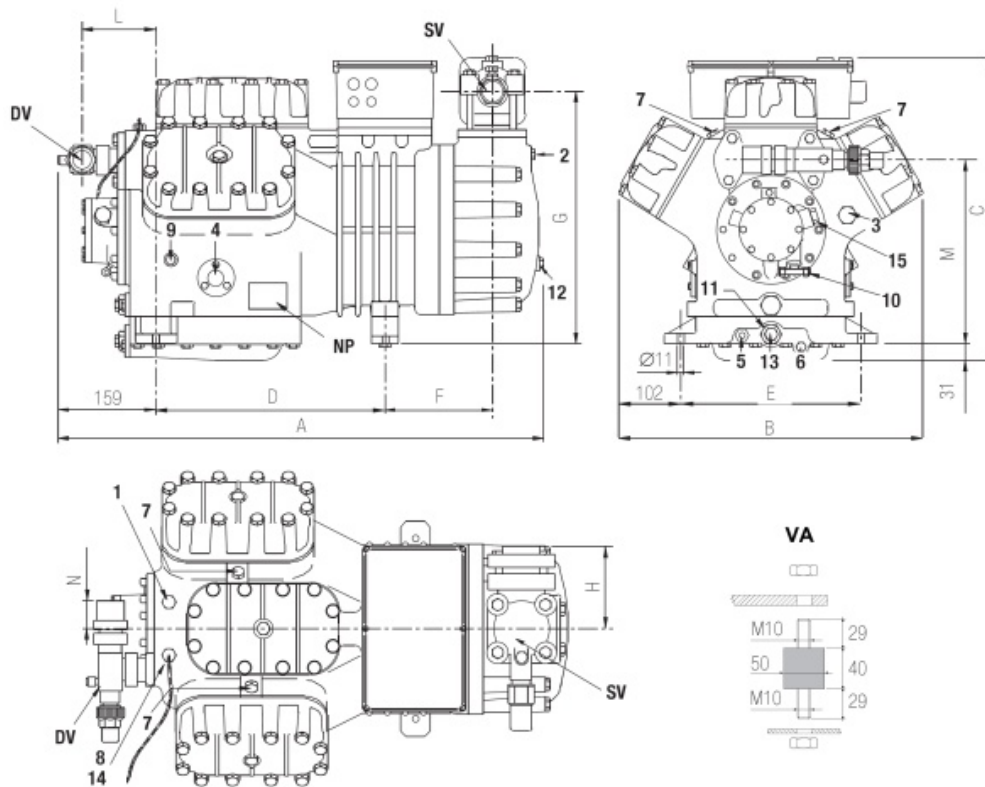
Operating conditions: suction gas temperature 20°C, 0K subcooling

$t_c$  - Condensing temperature [°C]

$t_e$  - Evaporating temperature [°C]

# Model: Z 40 126 Y

## Dimensions



A	806 mm
B	509 mm
C	536 mm
D	381 mm
E	305 mm
F	180 mm
G	433 mm
H	130 mm
L	125 mm
M	310 mm
N	42 mm

- |   |  |
|---|--|
| 1: high pressure plug                         | 2: low pressure plug                       |
| 3: oil charge plug                            | 4: oil level sight glass                   |
| 5: crankcase heater seat                      | 6: oil drain plug                          |
| 7: liquid injection valve plug                | 8: liquid injection sensor plug            |
| 9: oil pressure switch connection (l.p.)      | 10: oil pressure switch connection (h.p.)  |
| 11: oil filter                                | 12: oil return plug                        |
| 13: magnetic plug                             | 14: max. discharge temperature sensor plug |
| 15: electronic oil pressure switch connection | DV: discharge valve                        |
| NP: name plate                                | SV: suction valve                          |

# Model: Z 40 126 Y

Image

---

